

# Human HER2 Protein; His Tag

## Product Information

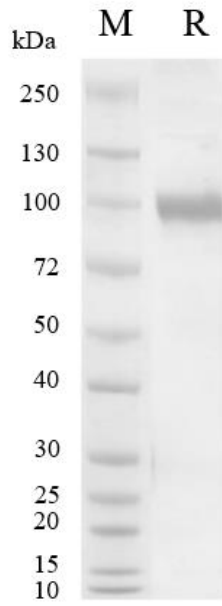
<b>Product Name</b>	Human HER2 Protein; His Tag
<b>Storage temp.</b>	Store at $\leq -70^{\circ}\text{C}$ , stable for 6 months after receipt. Recommend to aliquot the protein into smaller quantities for optimal storage. Please minimize freeze-thaw cycles.
<b>Catalog# / Size</b>	<b>GM-87568RP-100 / 100 <math>\mu\text{g}</math></b> <b>GM-87568RP-1000 / 1 mg</b>

## Protein Information

<b>Alternative Names</b>	ERBB2,CD340,HER-2,HER2,MLN19,NEU,NGL,TKR1
<b>Source</b>	Human HER2 Protein; His Tag (GM-87568RP) is expressed from human 293 cells (HEK-293). It contains AA Thr 23 - Thr 652 (Accession # P04626-1). This protein carries a His tag at the C-terminus.
<b>Purity</b>	> 95% as determined by SDS-PAGE
<b>Endotoxin</b>	< 1 EU/ $\mu\text{g}$ , determined by LAL gel clotting assay
<b>Predicted Mol Mass</b>	70.0 KDa
<b>Formulation</b>	Supplied as a 0.2 $\mu\text{m}$ filtered solution of PBS, pH7.4.
<b>Description</b>	<p>HER2 protein, full name Human Epidermal Growth Factor Receptor 2, is an important cell membrane receptor protein and a member of the epidermal growth factor receptor family. HER2 protein plays a crucial role in regulating cell growth, proliferation, and differentiation in normal cells.</p> <p>Abnormal expression of HER2 protein is closely associated with the occurrence and development of various malignant tumors, especially breast cancer, gastric cancer, and ovarian cancer. In tumor cells, overexpression or abnormal activation of HER2 protein can lead to enhanced cell proliferation, migration, and invasion capabilities, thereby promoting tumor growth and spread.</p> <p>Currently, commonly used HER2-targeted drugs in clinical practice include Trastuzumab and Pertuzumab, which can inhibit the growth and spread of tumor cells by blocking the activation of the HER2 signaling pathway, thereby improving patient survival rates and quality of life.</p> <p>In summary, HER2 protein plays a crucial role in the occurrence and development of tumors, and is of great significance for understanding the pathogenesis of tumors, selecting targeted treatment strategies, and evaluating patient prognosis.</p>

Version:3.3 Revision Date:25/12/2023

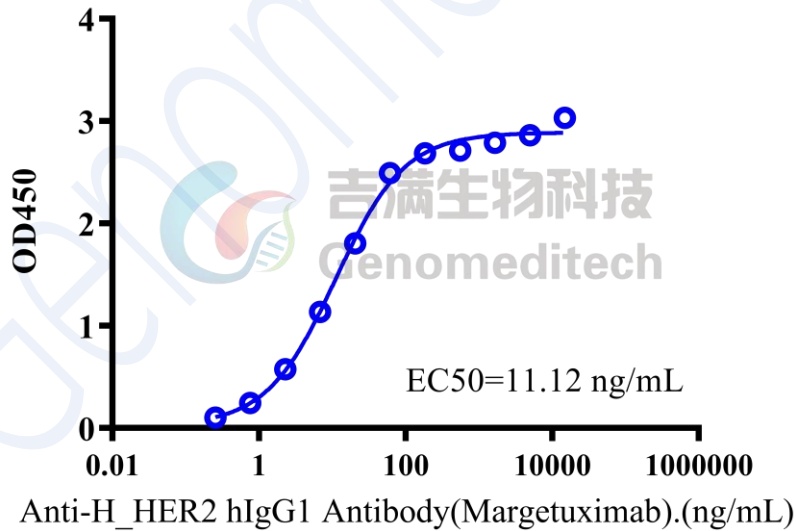
## SDS-PAGE



On SDS-PAGE under reducing (R) condition. The gel was stained overnight with Coomassie Blue. The purity of the protein is greater than 95%.

## Bioactivity-ELISA

### Human HER2 Protein; His Tag, ELISA 0.1 $\mu$ g Human HER2 Protein; His Tag of per well



Human HER2 Protein; His Tag (Catalog # GM-87568RP) was immobilized at 1  $\mu$ g/ml (100  $\mu$ L/well). Increasing concentrations of Anti-H\_HER2 hIgG1 Antibody (Margetuximab) (Catalog # GM-49468AB) were added.